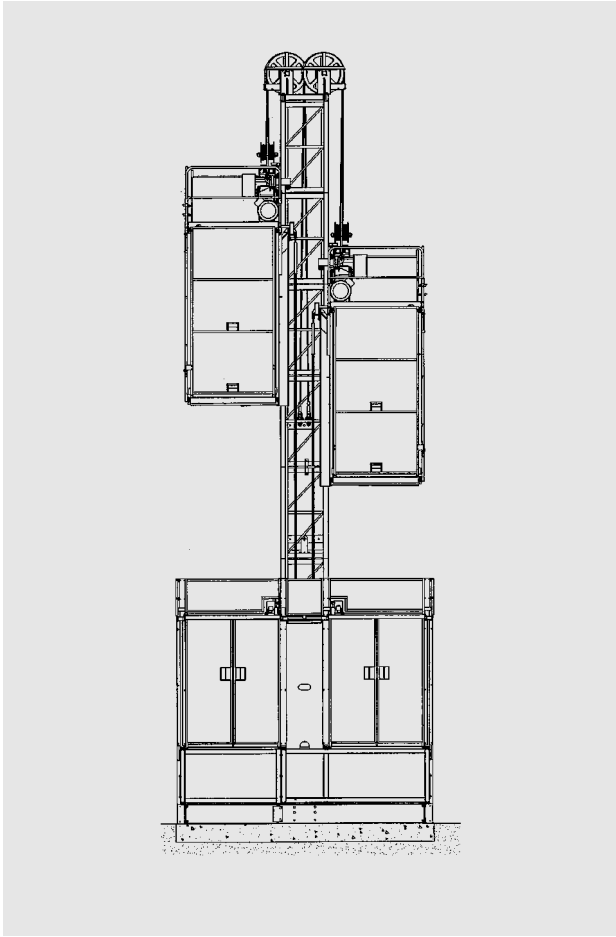


# SafCar™ Personnel/Material Hoist

## Model FC 7000

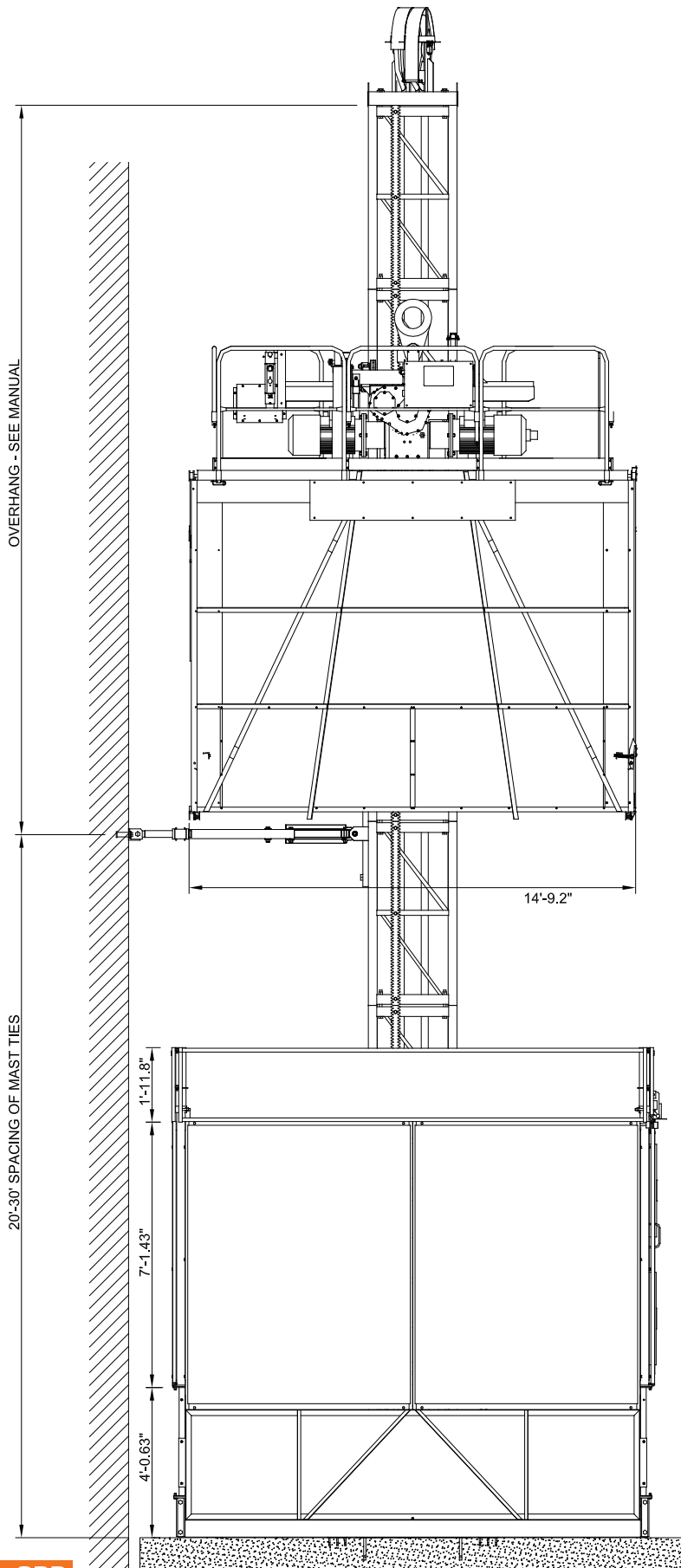
### Single/Dual Car



THE SMART WAY®



## Specifications FC 7000 Car



### Specifications FC 7000 Car

Safe Working Load	7000 lbs
Number of Passengers	35
Speed at 60 Hz.	300 fpm
Tie-In Spacing	Not more than 30' (ANSI A10.4)
Mast Section Length	4'- 11.37"
Car Weight	6710 lbs
Counterweight	8000 lbs
Internal Width × Length	5'-2.5" × 14'-5.2"
Internal Height	8'-4.75"
Door Opening W × H	5' × 6'-7.8"
Emergency Trap Door	2'-7"
Ground Enclosure	1860 lbs.
Mast Section Weight 6.3 mm Tubes	390 lbs
Mast Section Weight 8.8 mm Tubes	527 lbs

### Safety Features:

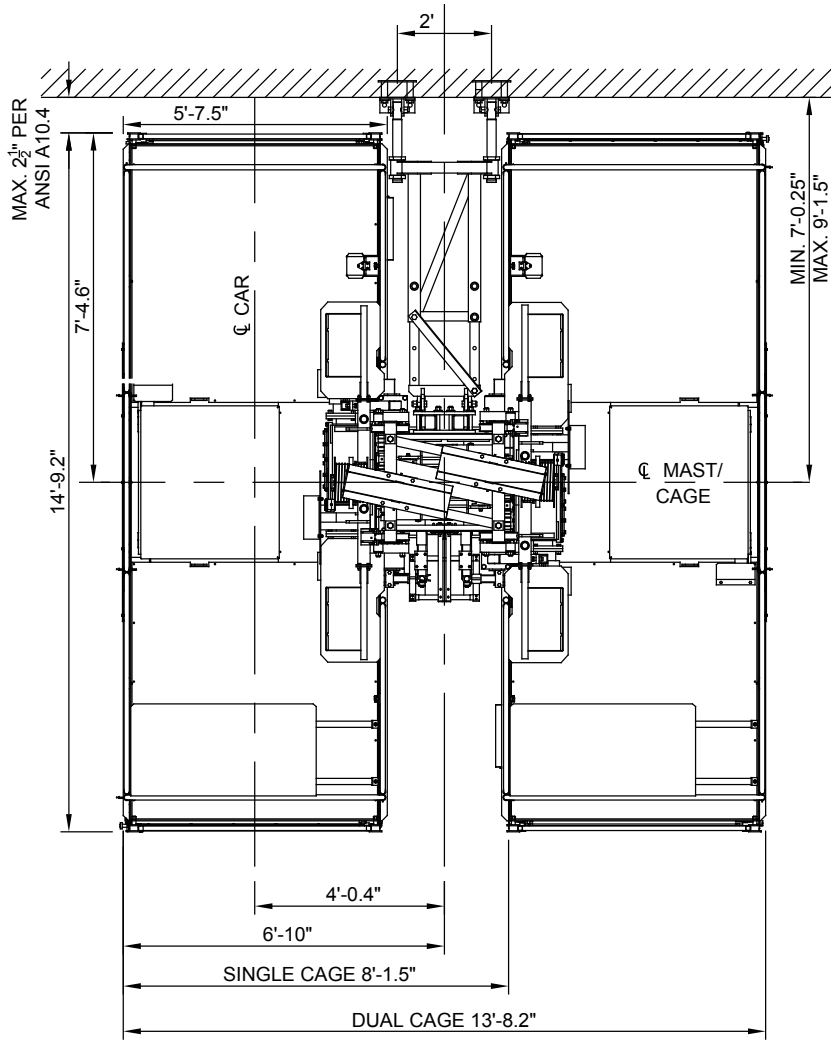
- Fail-safe brakes on both hoist motors.
- Heavy-duty overspeed governor which activates safeties that clamps directly onto the mast legs.
- Gate switches preventing operation of hoist with open doors.
- Counterweight
- Base enclosure
- Buffer stand and springs
- Power cord guide wheel assembly

### Optional Features & Services:

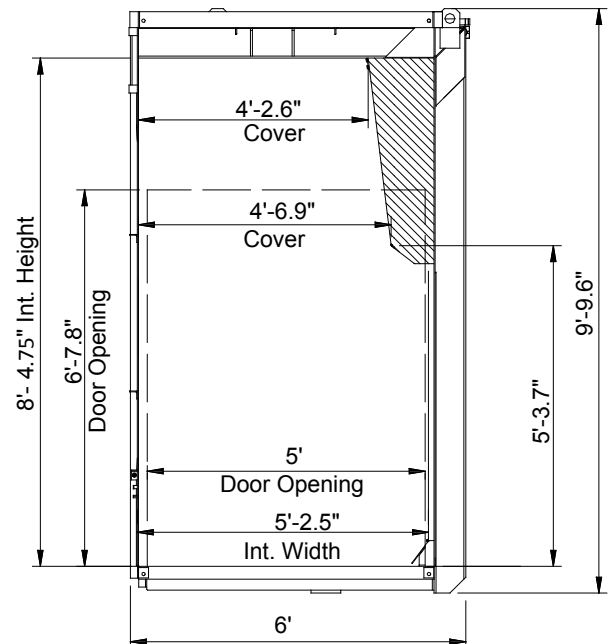
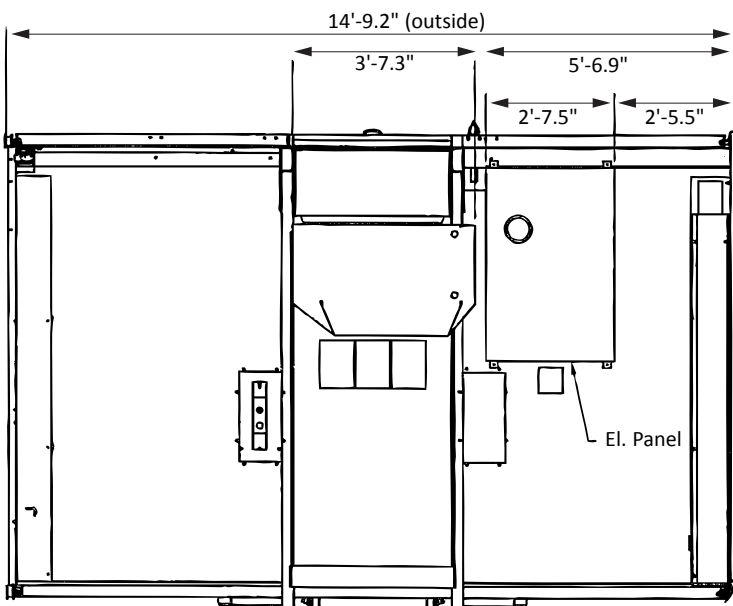
- Base platform and stairs
- Building landing gates
- Communication or signal system
- Preventative Maintenance
- Drop Test & Test Weights

## Specifications FC 7000

### Plan View



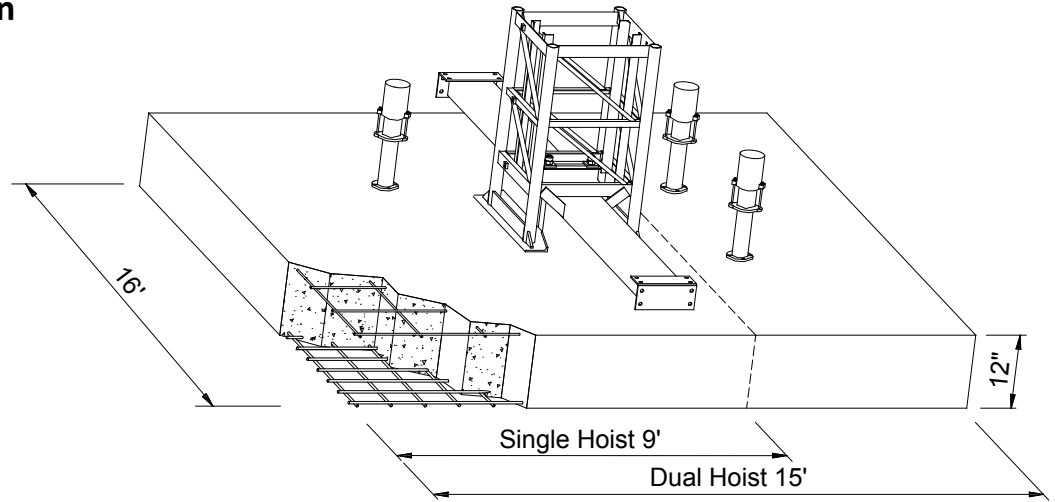
### Hoist Cage Inside Height and Width Dimensions:



# Personnel / Material Hoist

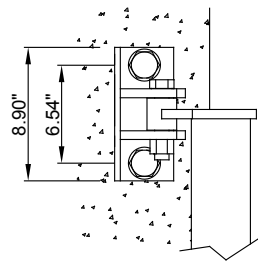
## Specifications FC 7000

### Foundation

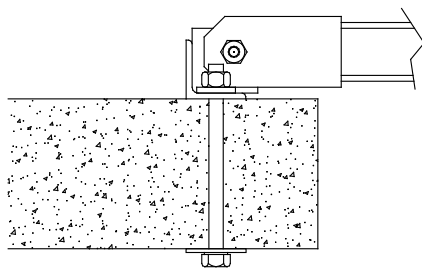
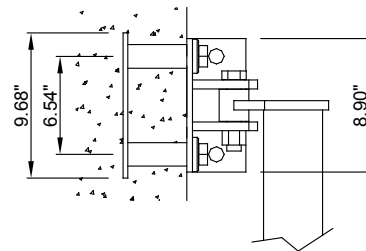


### Mast Bracing Connections

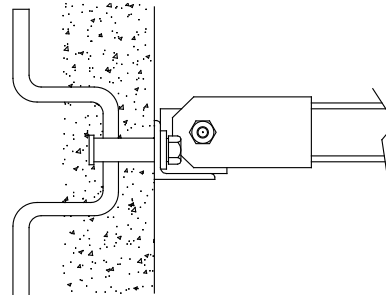
#### Wall Mount



#### Floor Mount



Elevation



Elevation

**Safway Group Holding LLC**  
 Corporate Headquarters  
 N19 W24200 Riverwood Drive  
 Waukesha, WI 53188  
 Toll free: (800) 558-4772  
 Telephone: (262) 523-6500

For a list of branch locations in the United States and Canada, visit our website at [www.safway.com](http://www.safway.com)

All drawings in this guide are for illustrative purposes only. This guide is intended for general information purposes only. Because of the many variables which affect the performance of the product line, some of the information in this brochure may not apply. For specific applications, contact Safway.  
 Note: All scaffolds shall be erected, modified and dismantled only under the supervision of a Competent Person. Erection, use, maintenance and disassembly must conform to current manufacturer's instructions as well as all federal, state, provincial and local regulations. Copies of complete Safety Guidelines for these and other products are available from Safway without charge.